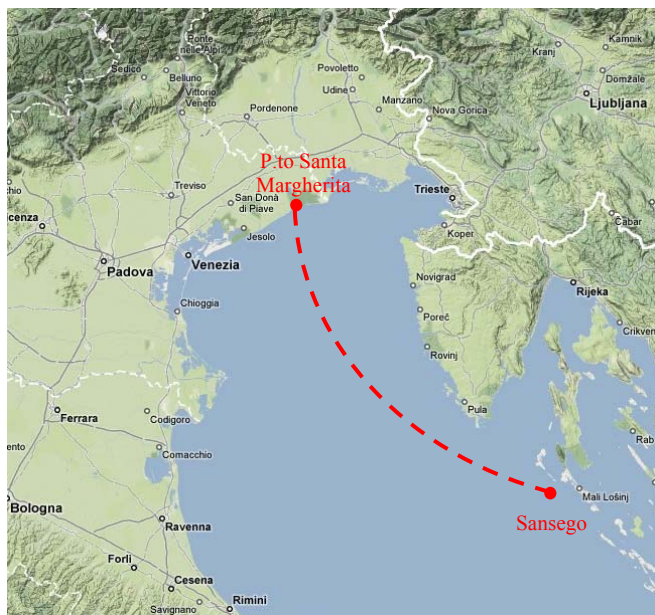


LA DUECENTO – BRIEFING METEO – GIOVEDÌ 20.05.2010 ore 17:00

(A cura di M.Cerasuolo –) Cell +39 348 3389328 E-mail: marcera@unive.it



SITUAZIONE

Minimo in quota sull'Europa Balcanica mantiene attivo il richiamo di moderate correnti settentrionali sull'Italia e il Mediterraneo centrale ove al suolo prevale un campo di pressioni relativamente alte.

PREVISIONE

Cielo parzialmente nuvoloso per nubi medio alte con possibilità di qualche addensamento cumuliforme sulla costa, venti freschi settentrionali con rinforzi nella parte meridionale della regata, temperature miti, mare da poco mosso a mosso.

VENERDÌ 21 ORE 12:00/z

PARZIALMENTE NUVOLOSO N 5-8 KT → BREZZA MARE 2-3 24°C 1019 hPA

SABATO 22 ORE 00:00/z

MOLTO NUVOLOSO NE 18-GUST 25 KT MARE 3 -4 19°C 1019 hPA

SABATO 22 ORE 12:00/z

MOLTO NUVOLOSO NW 12-8 KT MARE 3 21°C 1020 hPA

DOMENICA 23 ORE 00:00/z

POCO NUV. → SERENO SE 6-10 KT MARE 3 19°C 1019 hPA

DOMENICA 23 ORE 12:00/z

SERENO BREZZA 3-5 KT MARE 2 23°C 1018 hPA

EFFEMERIDI (POLA) – MAREA (VENEZIA) MAGGIO 2010- ORA LOCALE

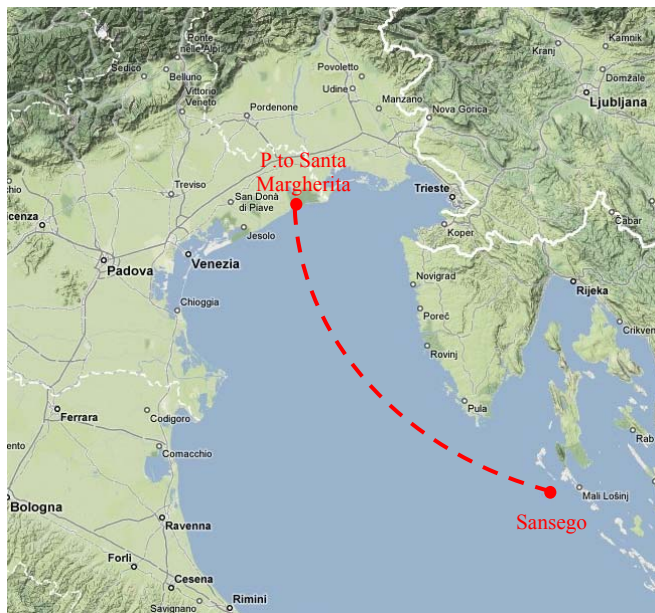
DAY	SUN		MOON		Moonlight Illumination	TIDE (cm)			
	Rise	Set	Rise	Set		Min	Max	Min	Max
V 21	05:29	20:34	13:16	01:45	49 %	---	03:55 +29	10:20 -3	17:50 +63
S 22	05:28	20:35	14:31	02:09	61 %	00:55 +8	06:05 +29	11:35 +2	18:40 +67
D 23	05:28	20:36	15:45	02:33	71 %	01:45 -4	07:30 +34	12:40 +5	19:25 +71

LEGENDA KT = NODI hPA =

STATO DEL MARE E ALT MAX ONDE - MARE 1 Calmo 0m ; 2 Poco mosso 0,1m; 3 Mosso 1,25m; 4 Molto mosso 2,5m; 5 Agitato 4m; 6 Molto agitato 6m; 7 Grosso 9m; 8 Molto grosso 14m; 9 Tempestoso > 14m;

The DUECENTO –WEATHER BRIEFING–THURSDAY 20.05.2010 17:00 LOC

(By M.Cerasuolo –) Cell +39 348 3389328 E-mail: marcera@unive.it



SITUATION

Upper LOW over the Balkans continues to drive thrusts of rather cold air from northern Europe towards Italy and central Med sea, where the surface pressure persist high.

FORECAST

Expect Cloudy to partly cloudy skies mainly due to medium-high coverage. Few chances for local cumuliform activity along coastal areas. Mild temperatures, northern winds light at first becoming moderate with gusts in the southern part of the race. Sea slight to moderate in gusting winds.

FRIDAY 21 12:00 GMT

PARTLY CLOUDY N 5-8 KT → BREEZE SEA 2-3 75°F 1019 HPA

SATURDAY 22 00:00 GMT

CLOUDY TO OVERCAST NE18 KT **GUST 25** SEA 3-4 66°F 1019 HPA

SATURDAY 22 12:00 GMT

CLOUDY NW12-8 KT SEA 3 70°F 1020 HPA

SUNDAY 23 00:00 GMT

PARTLY CLOUDY TO CLEAR SKY- SE 6-10 KT SEA 3 66°F 1019 HPA

SUNDAY 23 12:00 GMT

CLEAR SKY BREEZE SEA 3-2 73°F 1018 HPA

SOLAR/LUNAR DATA (PULA, HR) – TIDE (VENICE) MAY 2010 – LOCAL TIME

DAY	SUN		MOON		Moonlight Illumination	TIDE (cm)			
	Rise	Set	Rise	Set		Min	Max	Min	Max
V 21	05:29	20:34	13:16	01:45	49 %	---	03:55 +29	10:20 -3	17:50 +63
S 22	05:28	20:35	14:31	02:09	61 %	00:55 +8	06:05 +29	11:35 +2	18:40 +67
D 23	05:28	20:36	15:45	02:33	71 %	01:45 -4	07:30 +34	12:40 +5	19:25 +71

LEGENDA KT = KNOTS HPA = ETTOPASCAL

SEA STATE & MAX WAVE HIGHT - 1 Calm 0m ; 2 Smooth 0,1m; 3 Slight 1,25m; 4 Moderate 2,5m; 5 Rough 4m;

6 Very Rough 6m; 7 High 9m; 8 Very high 14m; 9 Phenomenal > 14m;